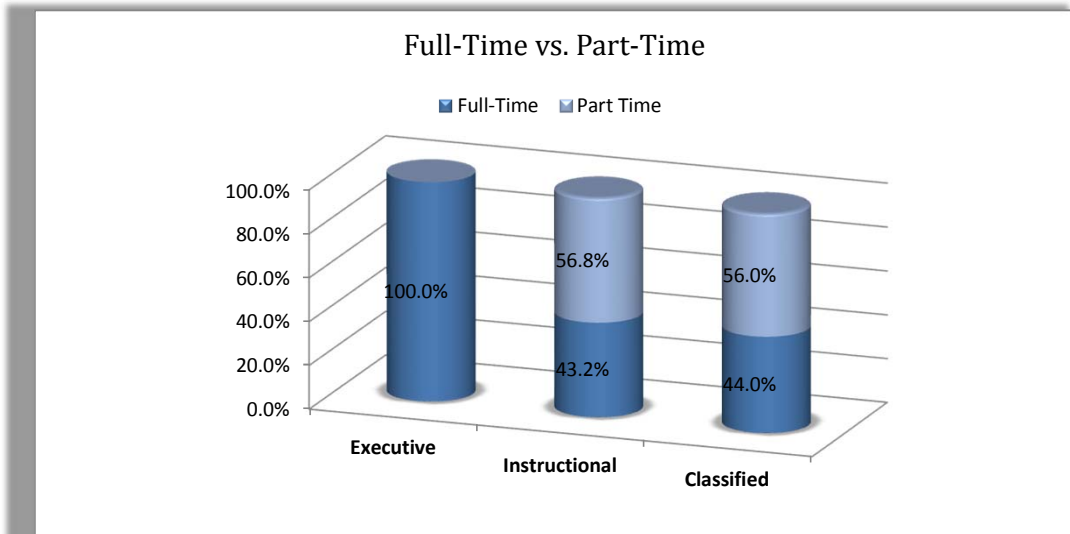
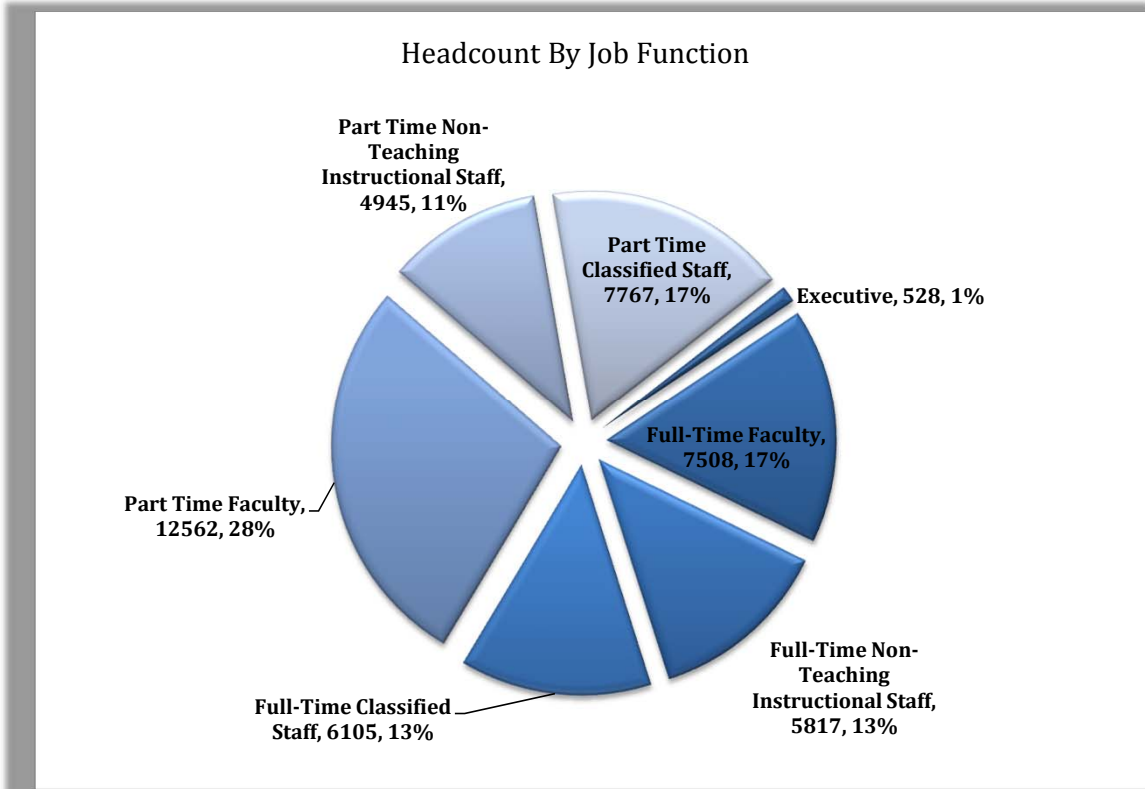


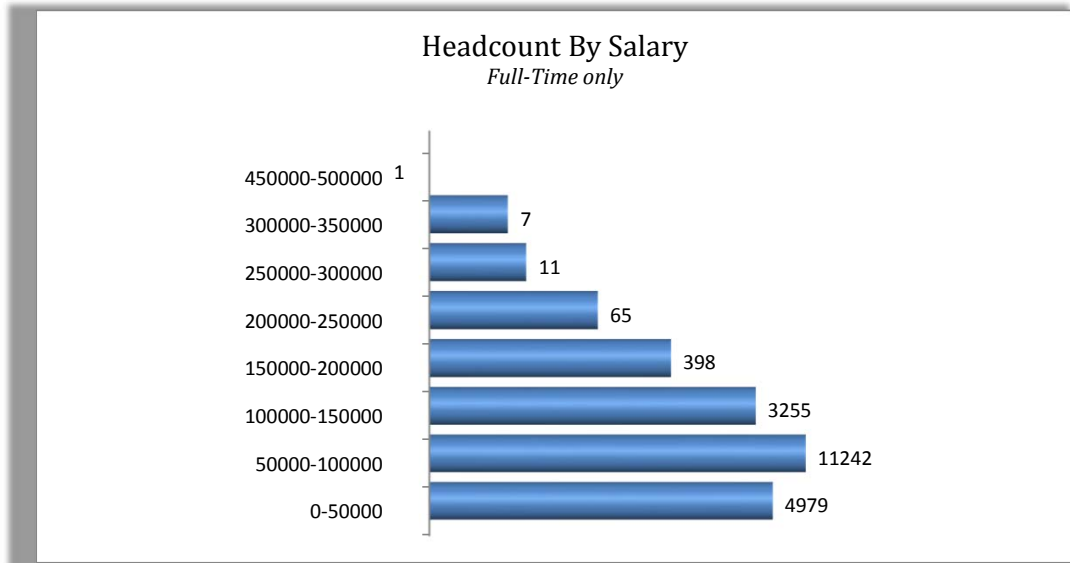
Fall 2016 Headcount Summary:

University-Wide

Source: Fall 2016 Frozen File



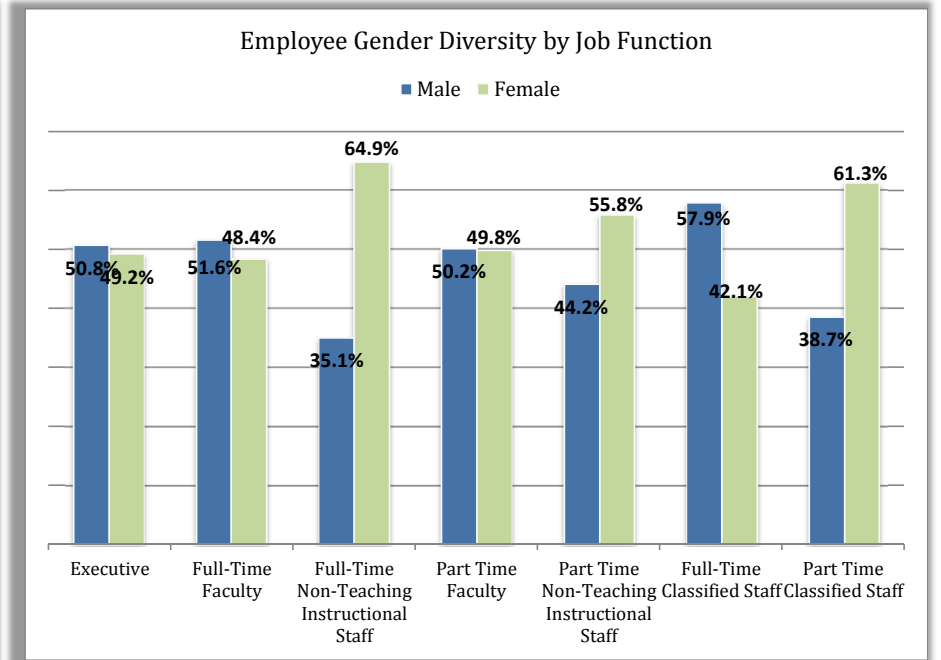
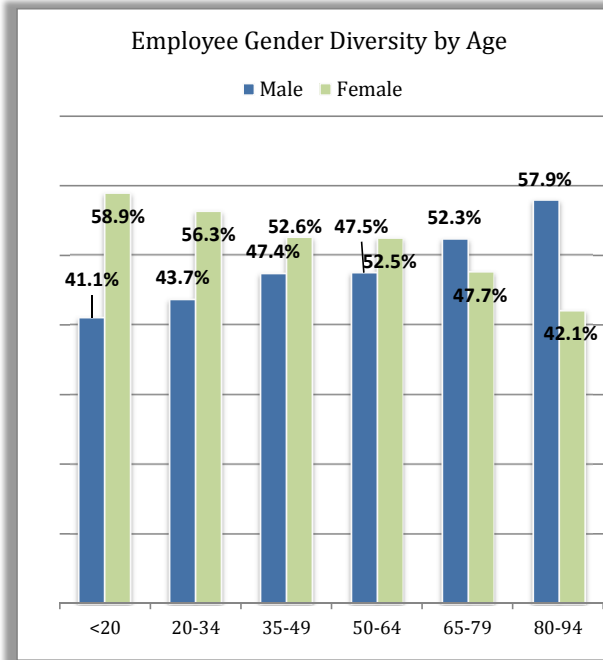
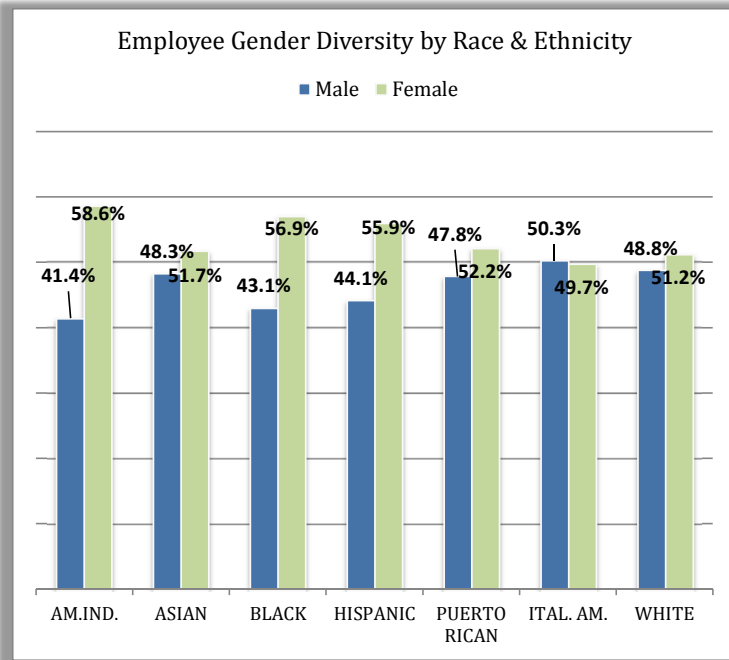
Job Function	Senior College	Community College	Total
Executive	399	129	528
Full-Time Faculty	5,237	2,271	7,508
Full-Time Non-Teaching Instructional Staff	3,951	1,866	5,817
Part Time Faculty	8,933	3,629	12,562
Part Time Non-Teaching Instructional Staff	3,647	1,298	4,945
Full-Time Classified Staff	4,222	1,883	6,105
Part Time Classified Staff	4,736	3,031	7,767
Total	31,125	14,107	45,232



Fall 2016 Gender, Race & Age Diversity:

University-Wide

Source: Fall 2016 Frozen File



Job Function	Male		Female		Total #	BLACK #	PUERTO RICAN #	HISPANIC #	ASIAN #	AM.IND. #	WHITE #	ITAL. AM. #
	#	%	#	%								
Executive	268	50.8%	260	49.2%	528	98	18	41	27		290	54
Full-Time Faculty	3,871	51.6%	3,637	48.4%	7,508	918	144	529	987	16	4,540	374
Full-Time Non-Teaching Instructional Staff	2,043	35.1%	3,774	64.9%	5,817	1,608	313	860	668	15	2,089	264
Part Time Faculty	6,305	50.2%	6,257	49.8%	12,562	2,018	263	994	1,498	25	7,363	401
Part Time Non-Teaching Instructional Staff	2,185	44.2%	2,760	55.8%	4,945	717	119	532	772	25	2,671	109
Full-Time Classified Staff	3,533	57.9%	2,572	42.1%	6,105	2,193	500	1,139	614	23	1,395	241
Part Time Classified Staff	3,002	38.7%	4,765	61.3%	7,767	2,088	213	1,813	1,414	48	2,065	126
Grand Total	21,207	46.9%	24,025	53.1%	45,232	9,640	1,570	5,908	5,980	152	20,413	1,569

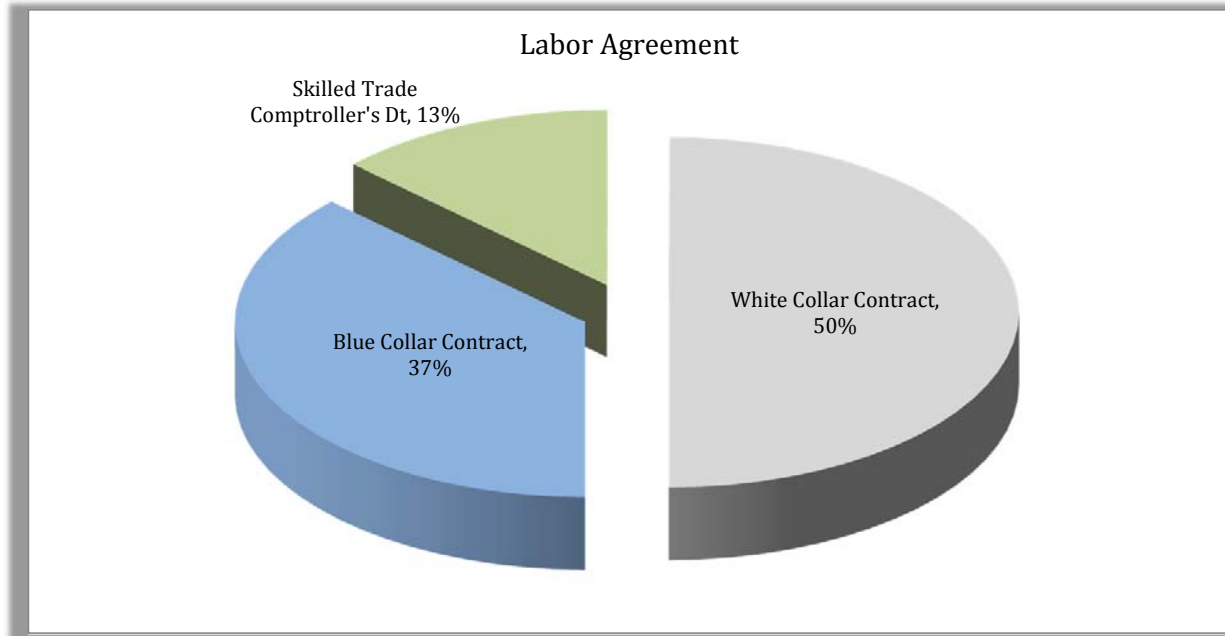
Fall 2016 Faculty Tenure Profile

Source: Fall 2016 Frozen File

	Einstein & Distinguished Professors	Tenure Track Faculty	Instructors	Distinguished Lecturers & Lectures	Total Faculty	# Tenured Faculty	% Tenured Faculty	# Lecturer w/ CCE	% Lecturer w/ CCE
College									
Senior Colleges	135	4,290	16	542	4,983	3,364	76.0%	338	73.5%
Baruch College	6	438	1	51	496	334	75.2%	26	66.7%
Brooklyn College	8	472	-	32	512	372	77.5%	19	70.4%
Central Office	-	-	-	-	-	-	0.0%	-	0.0%
City College	19	491	2	54	566	390	76.5%	41	85.4%
College of Staten Island	3	346	-	27	376	253	72.5%	18	66.7%
Graduate Center	55	76	1	-	132	126	96.2%	-	0.0%
Hunter College	16	532	1	82	631	448	81.8%	33	58.9%
John Jay College	8	343	-	38	389	280	79.8%	23	69.7%
Law School	1	36	5	1	43	30	81.1%	-	0.0%
Lehman College	5	303	1	50	359	222	72.1%	28	57.1%
Medgar Evers College	-	126	3	33	162	89	70.6%	31	96.9%
NYC College of Technology	-	390	-	33	423	252	64.6%	32	97.0%
Queens College	13	481	2	89	585	400	81.0%	62	74.7%
School of Journalism	-	8	-	2	10	6	75.0%	-	0.0%
School of Professional Studies	-	9	-	6	15	6	66.7%	-	0.0%
York College	-	166	-	30	196	116	69.9%	25	86.2%
CUNY School of Public Health	1	45	-	1	47	24	52.2%	-	0.0%
CUNY School of Medicine	-	28	-	13	41	16	57.1%	-	0.0%
Community Colleges	1	1,771	43	319	2,134	989	55.8%	206	65.6%
Borough of Manhattan CC	-	447	12	85	544	252	56.4%	52	61.2%
Bronx CC	-	247	4	39	290	150	60.7%	33	84.6%
Guttman Community College	-	32	9	2	43	6	18.8%	-	0.0%
Hostos CC	1	147	1	26	175	97	65.5%	18	75.0%
Hunter Campus Schools	-	-	-	-	-	-	0.0%	-	0.0%
Kingsborough CC	-	243	6	63	312	152	62.6%	31	51.7%
LaGuardia CC	-	339	5	40	384	154	45.4%	37	92.5%
Queensborough CC	-	316	6	64	386	178	56.3%	35	54.7%
Total Faculty	136	6,061	59	861	7,117	4,353	70.2%	544	70.3%

Fall 2016 Full-Time Classified Staff Union Representation

Source: Fall 2016 Frozen File



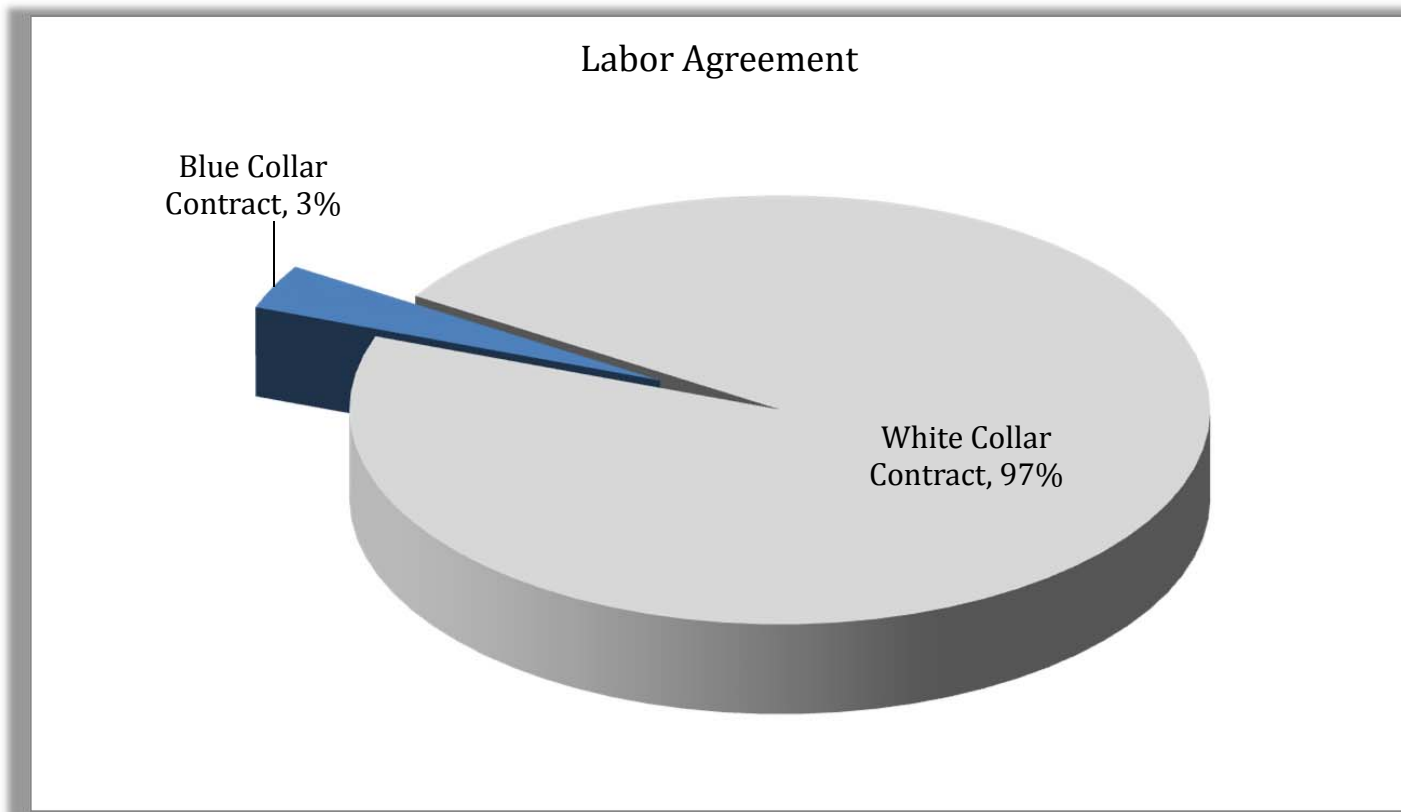
Union	# of Employees	% of Employees
Blue Collar Contract	2,146	37.3%
DC37 Local 1597	867	40.4%
DC37 Local 1797	154	7.2%
DC37 Local 983	15	0.7%
Teamsters Local 237	1,110	51.7%
Skilled Trade Comptroller's Dt	748	13.0%
DC37 Local 1087	17	2.3%
DC37 Local 924	130	17.4%
DC37 Local 983	39	5.2%
IBEW Local 3	79	10.6%
IUOE Local 30	208	27.8%
IUPAT Local 1969	53	7.1%
SEIU Local 246	10	1.3%
Steamfitters Local 638	12	1.6%
Teamsters Local 237	95	12.7%
UAP 1	62	8.3%
United Brotherhood Carpenters	43	5.7%
White Collar Contract	2,861	49.7%
DC37 Local 1407	143	5.0%
DC37 Local 2054	9	0.3%
DC37 Local 2627	801	28.0%
DC37 Local 375	146	5.1%
DC37 Local 384	1,671	58.4%
IATSE Local 306	19	0.7%
NYS Nurses Assoc	8	0.3%
SEIU Local 300	64	2.2%
Grand Total	5,755	100.0%

Note:

- The percentages reflect point in time data from HR system. Percentages may not equal to 100% due to rounding.
- Full-time staff represented by IATSE Local 1 (Stage and Theatre Union), and full-time staff at CUNY's Educational Opportunity Centers (EOC) represented by DC37 Local 384 have been excluded from this report due to its limited applicability CUNYwide. IATSE Local 1 represents 100% of full-time staff employed by the CUNY Theatres at Hunter College, Brooklyn College, and Hostos Community College; and DC37 Local 384 represents 100% of full-time staff employed by the CUNY's EOCs at the Borough of Manhattan Community College (Manhattan EOC), Bronx Community College (Bronx EOC), Queens College (Queens EOC), and New York City College of Technology (Brooklyn EOC).

Fall 2016 Part Time Classified Staff Union Representation

Source: Fall 2016 Frozen File



Union	# of Employees	% of Employees
Blue Collar Contract	255	3.4%
DC37 Local 1597	198	77.6%
Teamsters Local 237	57	22.4%
White Collar Contract	7,350	96.6%
DC37 Local 2054	7,066	96.1%
DC37 Local 2627	219	3.0%
DC37 Local 375	48	0.7%
DC37 Local 384	2	0.03%
NYS Nurses Assoc	15	0.2%
Grand Total	7,605	100.0%

Note:

1. Percentages may not equal to 100% due to rounding.
2. Hourly staff represented by IATSE Local 1 (Stage and Theatre Union), and hourly staff at CUNY's Educational Opportunity Centers (EOC) represented by DC37 Local 384 have been excluded from this report due to its limited applicability CUNYwide. IATSE Local 1 represents 100% of hourly staff employed by the CUNY Theatres at Hunter College, Brooklyn College, and Hostos Community College; and DC37 Local 384 represents 100% of hourly staff employed by the CUNY's EOCs at the Borough of Manhattan Community College (Manhattan EOC), Bronx Community College (Bronx EOC), Queens College (Queens EOC), and New York City College of Technology (Brooklyn EOC).

Fall 2016 Paid Staff Headcount Report*

Source: New York State Payroll (Payserv) data on pay date 11/23/2016 and New York City (PMS) data on pay date 11/18/2016

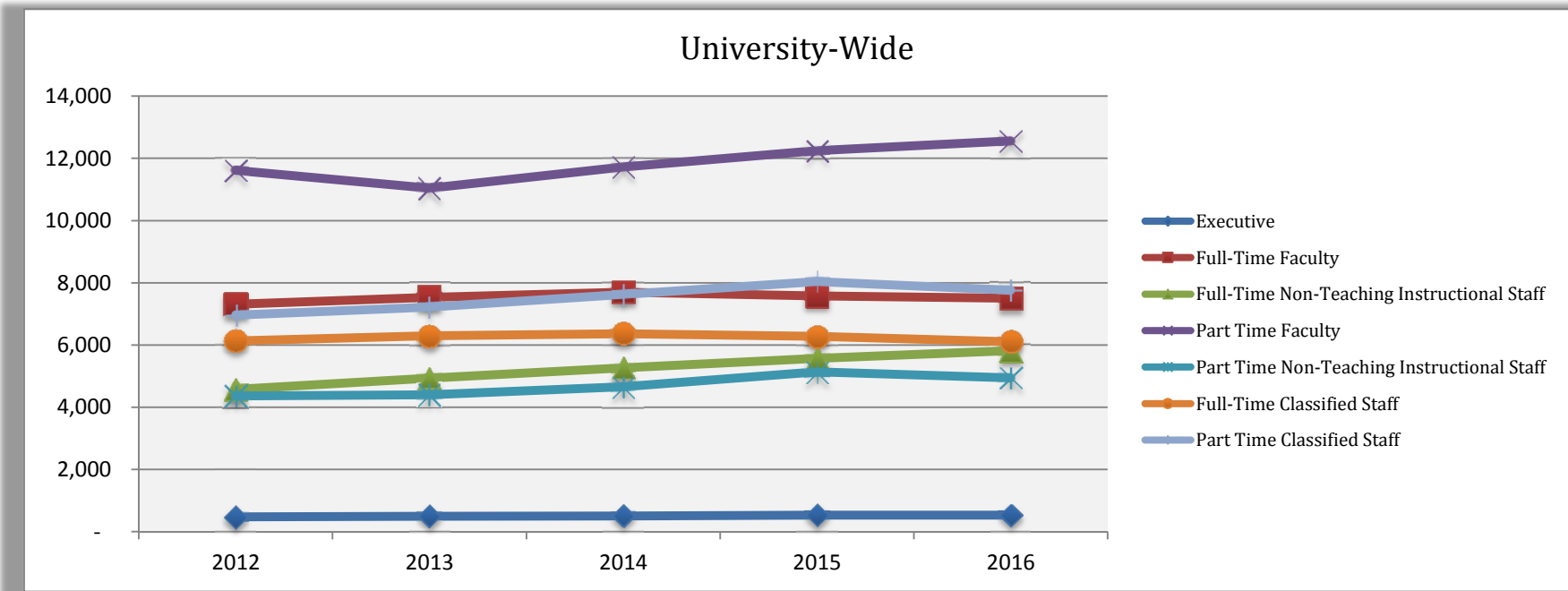
COLLEGES	FULL-TIME									PART TIME						GRAND TOTAL		
	GRADUATE ASSISTANTS									TOTAL FULL TIME	INST. TEACH	INST. NON TEACH.	TOTAL INST.	COLLEGE ASSISTANTS	STUDENT AIDES		CIVIL SERVICE	TOTAL PART TIME
	A	B	C	D	INST. TEACH	INST. NON TEACH.	TOTAL INST.	CIVIL SERVICE										
BARUCH	0	0	0	0	505	348	853	325	1,178	861	103	964	312	6	65	1,347	2,525	
BROOKLYN	0	66	0	0	545	336	947	346	1,293	836	57	893	542	5	105	1,545	2,838	
CENTRAL (UNIV. MGT)	0	0	0	0	8	581	589	383	972	0	74	74	127	0	83	284	1,256	
CITY	23	32	9	0	578	386	1,028	367	1,395	955	112	1,067	354	12	133	1,566	2,961	
CSI	13	20	0	0	388	247	668	262	930	826	116	942	433	1	97	1,473	2,403	
GRADUATE **	40	1,106	0	73	174	228	1,621	113	1,734	69	106	175	90	0	1	266	2,000	
HUNTER	59	7	1	0	681	423	1,171	430	1,601	1,681	135	1,816	596	16	201	2,629	4,230	
JOHN JAY	8	3	8	1	401	333	754	203	957	823	84	907	383	0	133	1,423	2,380	
LAW SCHOOL	0	37	0	0	43	64	144	26	170	0	20	20	13	0	13	46	216	
LEHMAN	1	0	0	0	377	277	655	254	909	670	50	720	309	28	79	1,136	2,045	
MEDGAR EVERS	0	0	0	0	175	220	395	152	547	363	35	398	204	0	52	654	1,201	
MEDICAL	0	0	0	0	43	49	92	13	105	37	5	42	9	3	2	56	161	
NYC TECH	0	0	2	0	432	230	664	253	917	1,227	216	1,443	225	0	43	1,711	2,628	
PUBLIC HLTH	4	4	0	5	50	29	92	13	105	2	9	11	15	0	0	26	131	
QUEENS	7	43	0	2	610	304	966	312	1,278	1,076	98	1,174	356	4	102	1,636	2,914	
SCHOOL OF JOURNALISM	0	0	0	0	18	21	39	20	59	68	11	79	14	0	5	98	157	
SCHOOL OF PROF. STUDIES	0	0	0	0	16	97	113	15	128	251	28	279	34	0	1	314	442	
YORK	0	0	0	0	203	174	377	202	579	478	35	513	229	0	53	795	1,374	
SENIOR COLLEGE SUB-TOTAL	155	1,318	20	81	5,247	4,347	11,168	3,689	14,857	10,223	1,294	11,517	4,245	75	1,168	17,005	31,862	
BMCC	0	0	0	0	573	355	928	417	1,345	1,313	140	1,453	555	0	68	2,076	3,421	
BXCC	0	0	0	0	320	233	553	364	917	552	96	648	299	21	22	990	1,907	
GUTTMAN	0	0	0	0	50	95	145	31	176	28	10	38	107	0	4	149	325	
HOSTOS	0	0	0	0	188	203	391	214	605	351	16	367	288	0	16	671	1,276	
KBCC	0	0	0	0	345	278	623	322	945	833	305	1,138	394	161	24	1,717	2,662	
LGCC	0	0	0	0	394	411	805	322	1,127	874	114	988	508	0	51	1,547	2,674	
QBCC	0	0	0	0	401	286	687	301	988	719	156	875	446	0	27	1,348	2,336	
COMMUNITY COLLEGE SUB-TOTAL	0	0	0	0	2,271	1,861	4,132	1,971	6,103	4,670	837	5,507	2,597	182	212	8,498	14,601	
HUNTER CAMPUS SCHOOLS	0	0	0	0	139	6	145	24	169	29	0	29	19	0	1	49	218	
UNIVERSITY-WIDE TOTAL	155	1,318	20	81	7,657	6,214	15,445	5,684	21,129	14,922	2,131	17,053	6,861	257	1,381	25,552	46,681	

* Numbers may differ from reports generated by CUNYfirst

** The William E. Macauley Honors College data is merged with The Graduate School and University Center data

Fall 2012 - 2016 Workforce Comparison

Source: Fall 2012 - 2016 Frozen File



Job Function	2012	2013	2014	2015	2016	% Change 2012-2016
Executive	476	499	508	534	528	10.9%
Full-Time Faculty	7,314	7,533	7,698	7,580	7,508	2.7%
Full-Time Non-Teaching Instructional Staff	4,573	4,934	5,269	5,572	5,817	27.2%
Part Time Faculty	11,610	11,040	11,727	12,250	12,562	8.2%
Part Time Non-Teaching Instructional Staff	4,364	4,403	4,655	5,137	4,945	13.3%
Full-Time Classified Staff	6,133	6,294	6,364	6,275	6,105	-0.5%
Part Time Classified Staff	6,957	7,221	7,622	8,039	7,767	11.6%
Grand Total	41,427	41,924	43,843	45,387	45,232	9.2%