

STAFF FACTS

Fall 2015

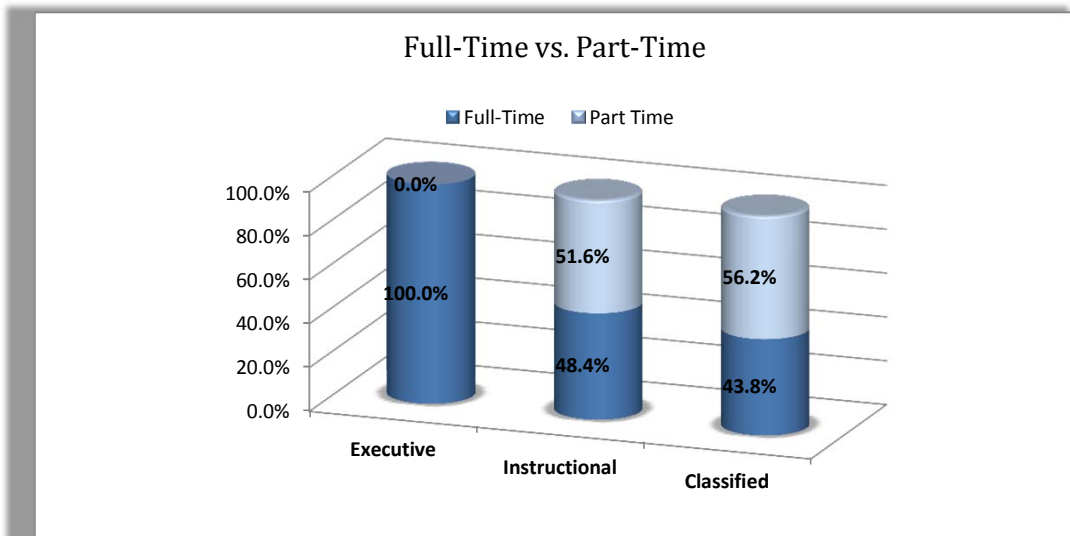
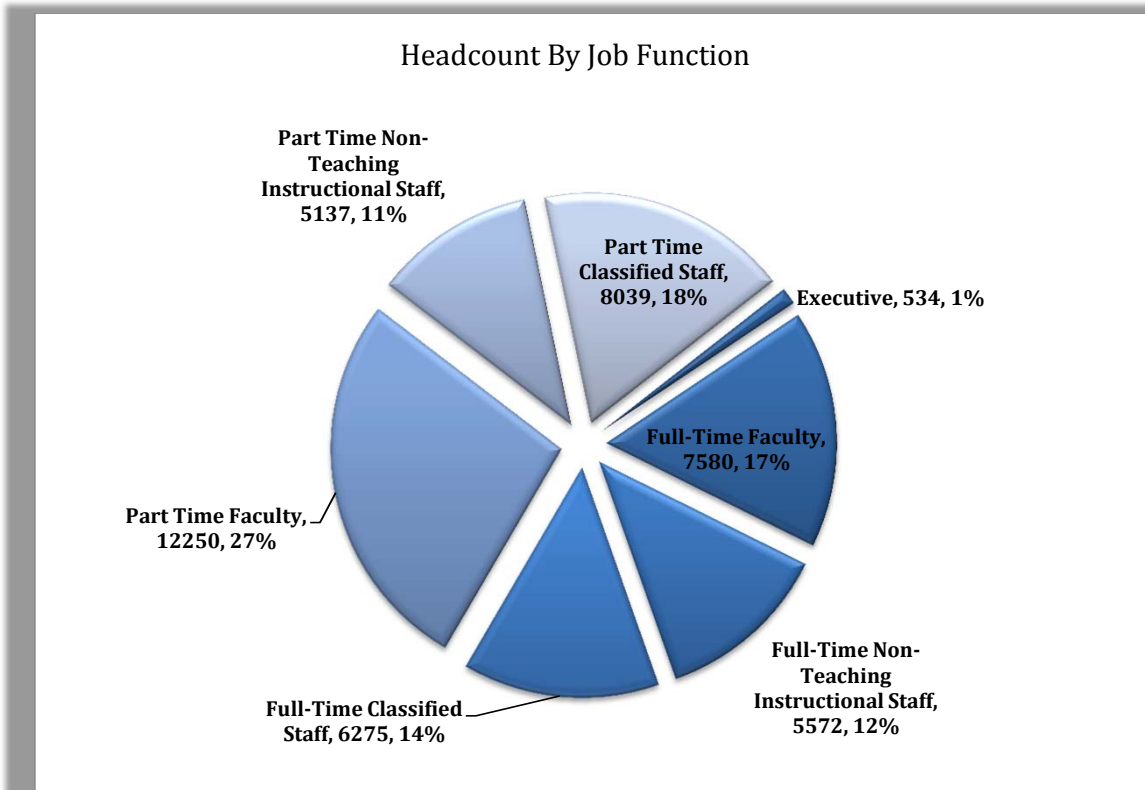
Office of Human Resources Management

The City University of New York

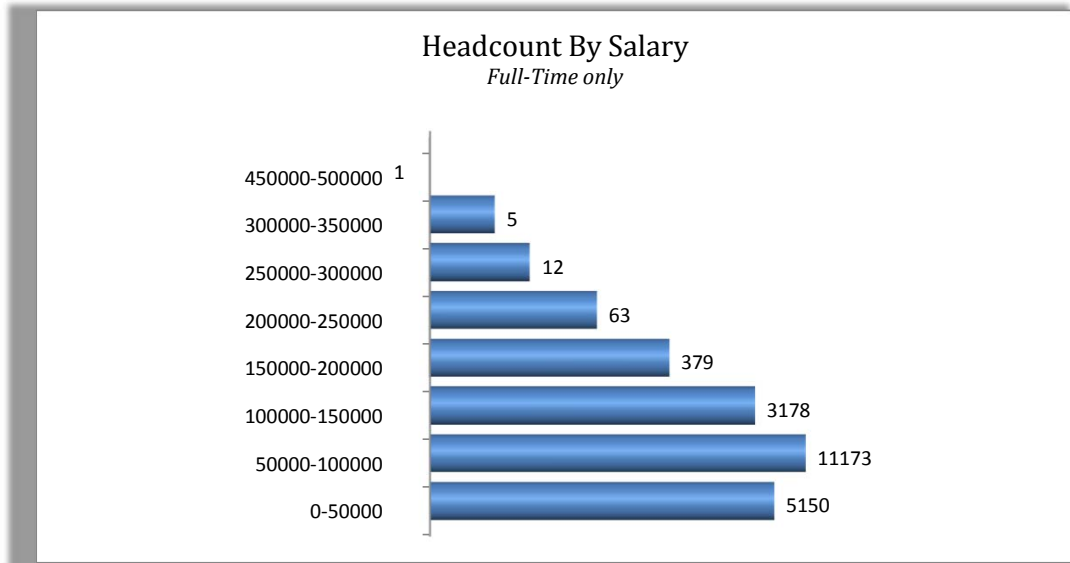
Fall 2015 Headcount Summary:

University-Wide

Source: Fall 2015 Frozen File



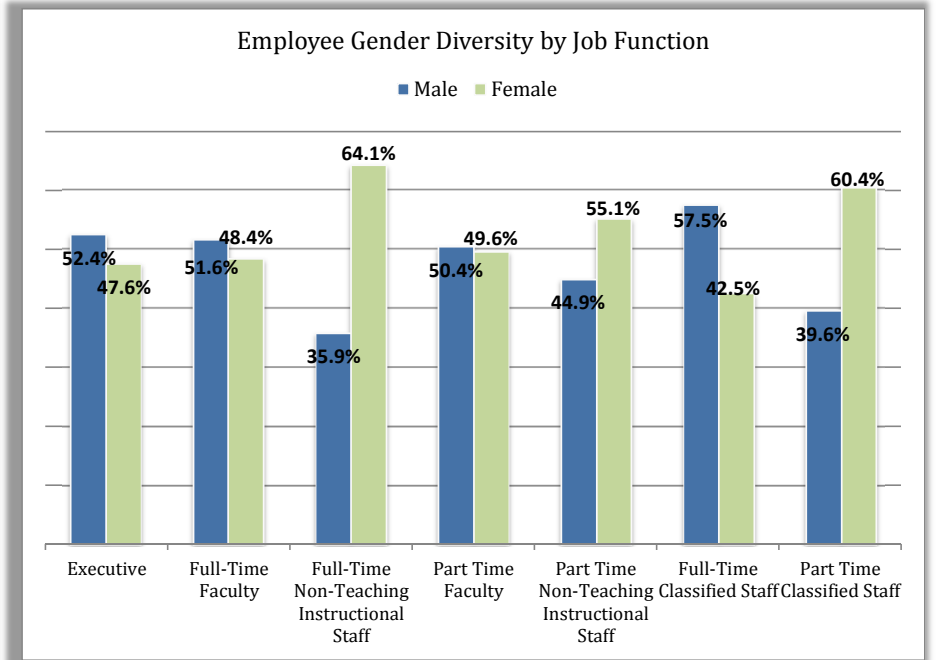
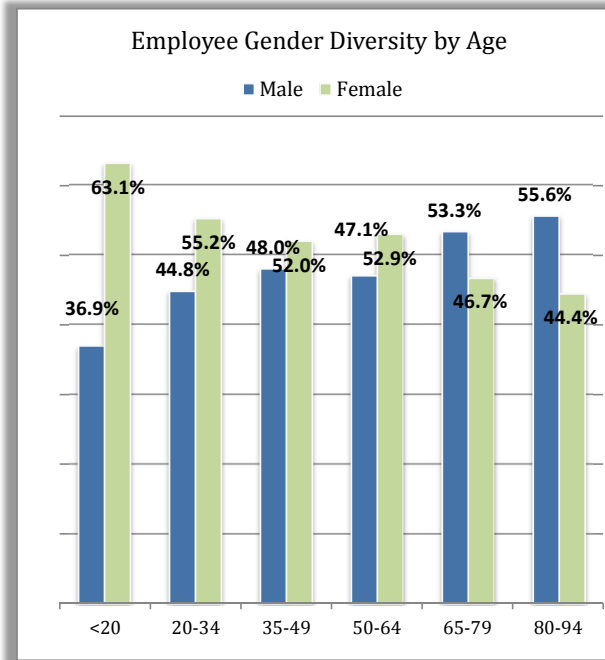
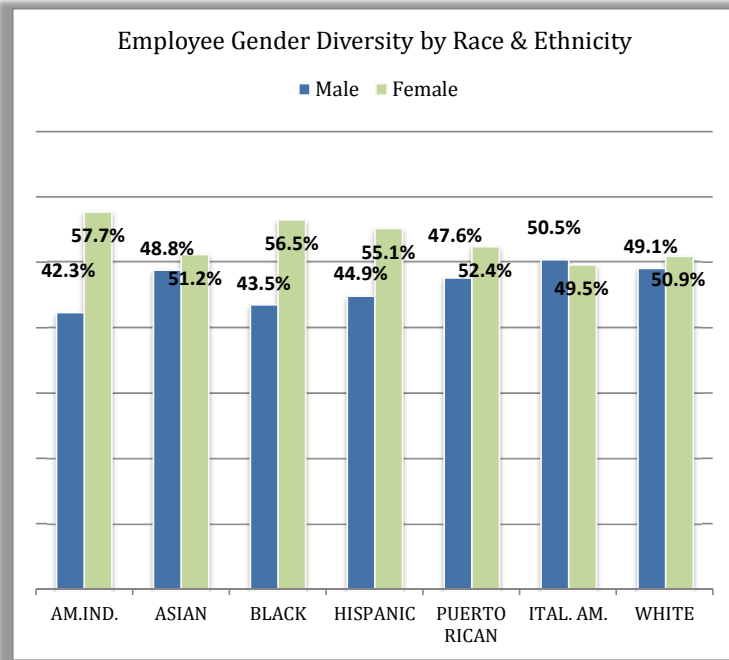
Job Function	Senior College	Community College	Total
Executive	414	120	534
Full-Time Faculty	5,308	2,272	7,580
Full-Time Non-Teaching Instructional Staff	3,826	1,746	5,572
Part Time Faculty	8,579	3,671	12,250
Part Time Non-Teaching Instructional Staff	3,843	1,294	5,137
Full-Time Classified Staff	4,322	1,953	6,275
Part Time Classified Staff	5,075	2,964	8,039
Total	31,367	14,020	45,387



Fall 2015 Gender, Race & Age Diversity:

University-Wide

Source: Fall 2015 Frozen File



Job Function	Male		Female		Total #	BLACK #	BLACK %	PUERTO RICAN		HISPANIC #	HISPANIC %	ASIAN		AM.IND. #	AM.IND. %	WHITE		ITAL. AM. #	ITAL. AM. %
	#	%	#	%				#	%			#	%			#	%		
Executive	280	52.4%	254	47.6%	534	101	18.9%	20	3.7%	44	8.2%	28	5.2%	1	0.2%	285	53.4%	55	10.3%
Full-Time Faculty	3,915	51.6%	3,665	48.4%	7,580	929	12.3%	147	1.9%	521	6.9%	955	12.6%	16	0.2%	4,628	61.1%	384	5.1%
Full-Time Non-Teaching Instructional Staff	1,998	35.9%	3,574	64.1%	5,572	1,511	27.1%	329	5.9%	775	13.9%	640	11.5%	17	0.3%	2,019	36.2%	281	5.0%
Part Time Faculty	6,173	50.4%	6,077	49.6%	12,250	1,975	16.1%	275	2.2%	945	7.7%	1,439	11.7%	20	0.2%	7,191	58.7%	405	3.3%
Part Time Non-Teaching Instructional Staff	2,308	44.9%	2,829	55.1%	5,137	769	15.0%	122	2.4%	546	10.6%	721	14.0%	17	0.3%	2,847	55.4%	115	2.2%
Full-Time Classified Staff	3,607	57.5%	2,668	42.5%	6,275	2,241	35.7%	531	8.5%	1,152	18.4%	621	9.9%	22	0.4%	1,444	23.0%	264	4.2%
Part Time Classified Staff	3,183	39.6%	4,856	60.4%	8,039	2,226	27.7%	269	3.3%	1,742	21.7%	1,465	18.2%	37	0.5%	2,159	26.9%	141	1.8%
Grand Total	21,464	47.3%	23,923	52.7%	45,387	9,752	21.5%	1,693	3.7%	5,725	12.6%	5,869	12.9%	130	0.3%	20,573	45.3%	1,645	3.6%

Fall 2015 Faculty Tenure Profile

Source: Fall 2015 Frozen File

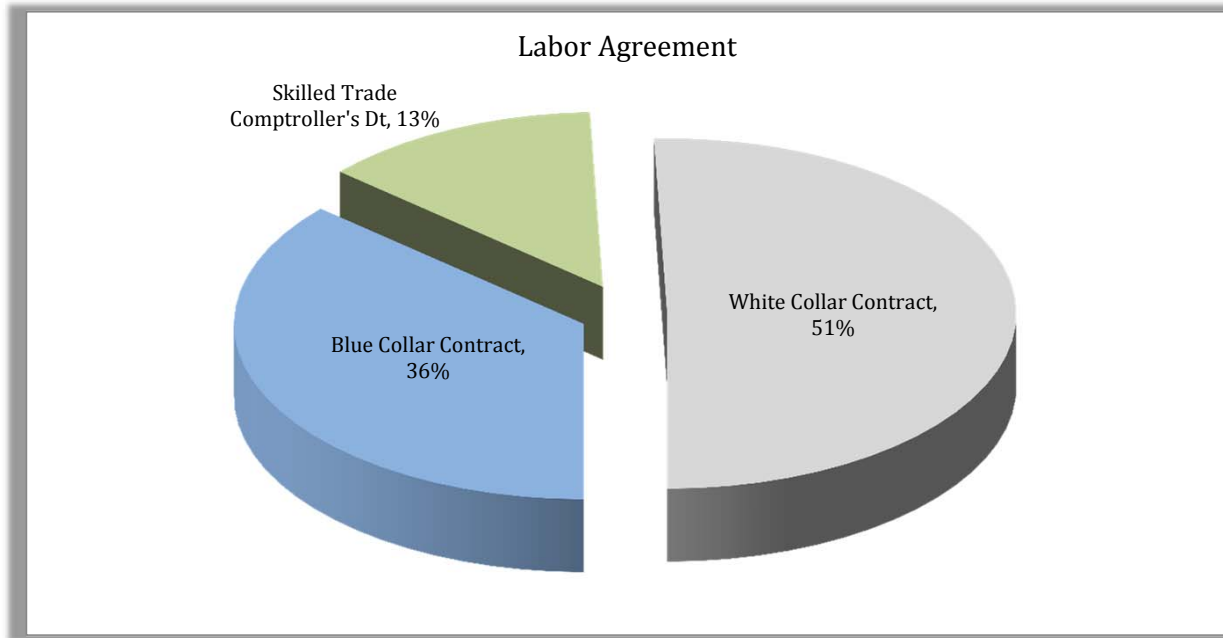
	Einstein & Distinguished Professors	Tenure Track Faculty	Instructors	Distinguished Lecturers & Lectures	Total Faculty	# Tenured Faculty	% Tenured Faculty	# Lecturer w/ CCE	% Lecturer w/ CCE
College									
Senior Colleges	139	4,341	19	534	5,033	3,333	74.4%	342	75.5%
Baruch College	7	447	-	51	505	340	74.9%	27	71.1%
Brooklyn College	8	480	-	34	522	375	76.8%	24	77.4%
Central Office	-	-	-	-	-	-	0.0%	-	0.0%
City College	19	526	2	69	616	403	73.9%	42	73.7%
College of Staten Island	3	347	-	25	375	243	69.4%	18	72.0%
Graduate Center	56	90	-	3	149	128	87.7%	1	50.0%
Hunter College	17	562	2	73	654	470	81.2%	31	64.6%
John Jay College	8	347	1	40	396	271	76.3%	23	69.7%
Law School	1	35	6	1	43	26	72.2%	-	0.0%
Lehman College	7	296	1	53	357	222	73.3%	30	60.0%
Medgar Evers College	-	132	2	34	168	90	68.2%	31	96.9%
NYC College of Technology	-	395	1	33	429	239	60.5%	31	93.9%
Queens College	13	493	4	81	591	394	77.9%	61	81.3%
School of Journalism	-	9	-	1	10	7	77.8%	-	0.0%
School of Professional Studies	-	8	-	6	14	6	75.0%	-	0.0%
York College	-	174	-	30	204	119	68.4%	23	79.3%
Community Colleges	1	1,748	50	308	2,107	974	55.7%	209	69.2%
Borough of Manhattan CC	-	445	13	75	533	256	57.5%	52	69.3%
Bronx CC	-	246	5	39	290	151	61.4%	33	84.6%
Guttman Community College	-	30	7	1	38	6	20.0%	-	0.0%
Hostos CC	1	148	1	29	179	97	65.1%	19	70.4%
Hunter Campus Schools	-	-	-	-	-	-	0.0%	-	0.0%
Kingsborough CC	-	250	9	66	325	148	59.2%	33	53.2%
LaGuardia CC	-	324	10	42	376	145	44.8%	36	85.7%
Queensborough CC	-	305	5	56	366	171	56.1%	36	64.3%
Total Faculty	140	6,089	69	842	7,140	4,307	69.1%	551	73.0%

Note:

1. This Report Excludes Substitute and Visiting Appointments
2. Tenure Track Faculty includes all Full-Time Professorial Titles eligible for Tenure (Professor, Assoc. Professor, Asst. Professor)
3. Einstein and Distinguished Professors have Tenure in Underlying Titles and are therefore part of the Tenured Faculty Category

Fall 2015 Full-Time Classified Staff Union Representation

Source: Fall 2015 Frozen File



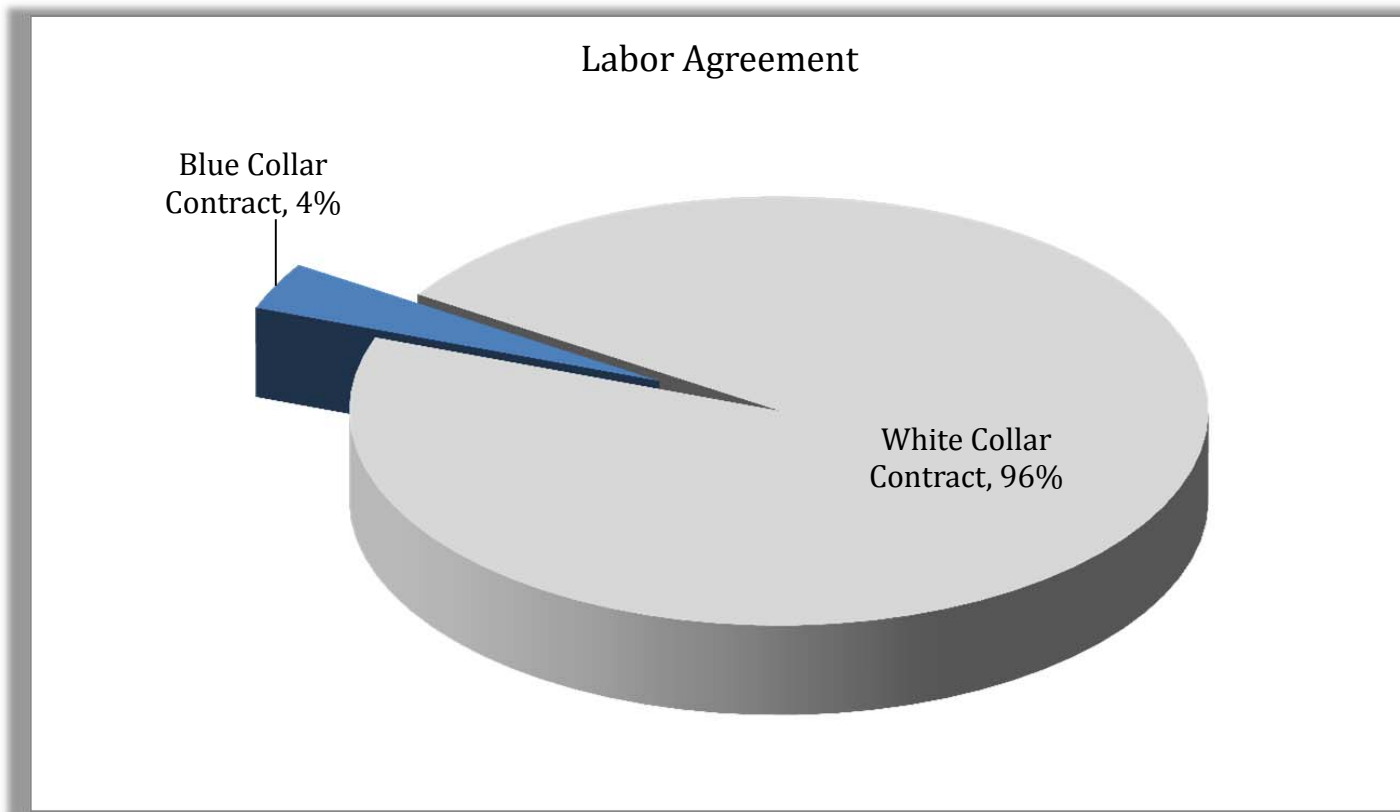
Union	# of Employees	% of Employees
Blue Collar Contract	2,169	36.6%
DC37 Local 1597	868	40.0%
DC37 Local 1797	150	6.9%
DC37 Local 983	14	0.6%
Teamsters Local 237	1,137	52.4%
Skilled Trade Comptroller's Dt	772	13.0%
DC37 Local 1087	21	2.7%
DC37 Local 924	134	17.4%
DC37 Local 983	52	6.7%
IBEW Local 3	79	10.2%
IUOE Local 30	211	27.3%
IUPAT Local 1969	47	6.1%
SEIU Local 246	10	1.3%
Steamfitters Local 638	15	1.9%
Teamsters Local 237	95	12.3%
UAP 1	66	8.5%
United Brotherhood Carpenters	42	5.4%
White Collar Contract	2,984	50.4%
DC37 Local 1407	140	4.7%
DC37 Local 2054	10	0.3%
DC37 Local 2627	802	26.9%
DC37 Local 375	147	4.9%
DC37 Local 384	1,799	60.3%
IATSE Local 306	18	0.6%
NYS Nurses Assoc	7	0.2%
SEIU Local 300	61	2.0%
Grand Total	5,925	100.0%

Note:

- The percentages reflect point in time data from the payroll systems. Percentages may not equal to 100% due to rounding.
- Full-time staff represented by IATSE Local 1 (Stage and Theatre Union), and full-time staff at CUNY's Educational Opportunity Centers (EOC) represented by DC37 Local 384 have been excluded from this report due to its limited applicability CUNYwide. IATSE Local 1 represents 100% of full-time staff employed by the CUNY Theatres at Hunter College, Brooklyn College, and Hostos Community College; and DC37 Local 384 represents 100% of full-time staff employed by the CUNY's EOCs at the Borough of Manhattan Community College (Manhattan EOC), Bronx Community College (Bronx EOC), Queens College (Queens EOC), and New York City College of Technology (Brooklyn EOC).

Fall 2015 Part Time Classified Staff Union Representation

Source: Fall 2015 Frozen File



Union	# of Employees	% of Employees
Blue Collar Contract	281	3.6%
DC37 Local 1597	215	76.5%
Teamsters Local 237	66	23.5%
White Collar Contract	7,596	96.4%
DC37 Local 2054	7,284	95.9%
DC37 Local 2627	233	3.1%
DC37 Local 375	63	0.8%
NYS Nurses Assoc	16	0.2%
Grand Total	7,877	100.0%

Note:

1. Percentages may not equal to 100% due to rounding.
2. Hourly staff represented by IATSE Local 1 (Stage and Theatre Union), and hourly staff at CUNY's Educational Opportunity Centers (EOC) represented by DC37 Local 384 have been excluded from this report due to its limited applicability CUNYwide. IATSE Local 1 represents 100% of hourly staff employed by the CUNY Theatres at Hunter College, Brooklyn College, and Hostos Community College; and DC37 Local 384 represents 100% of hourly staff employed by the CUNY's EOCs at the Borough of Manhattan Community College (Manhattan EOC), Bronx Community College (Bronx EOC), Queens College (Queens EOC), and New York City College of Technology (Brooklyn EOC).

Fall 2015 Paid Staff Headcount Report*

Source: New York State Payroll (Payserv) data on pay date 11/25/2015 and New York City (PMS) data on pay date 11/20/2015

COLLEGES	FULL-TIME									PART TIME						GRAND TOTAL		
	GRADUATE ASSISTANTS									TOTAL FULL TIME	INST. TEACH	INST. NON TEACH.	TOTAL INST.	COLLEGE ASSISTANTS	STUDENT AIDES		CIVIL SERVICE	TOTAL PART TIME
	A	B	C	D	INST. TEACH	INST. NON TEACH.	TOTAL INST.	CIVIL SERVICE										
BARUCH	0	0	0	0	514	340	854	312	1,166	854	86	940	368	7	54	1,369	2,535	
BROOKLYN	0	71	0	0	541	324	936	352	1,288	812	65	877	568	12	95	1,552	2,840	
CENTRAL (UNIV. MGT)	0	0	0	0	5	623	628	403	1,031	0	81	81	152	0	108	341	1,372	
CITY	35	38	18	0	628	429	1,148	414	1,562	1,025	114	1,139	342	19	129	1,629	3,191	
CSI	18	20	0	0	391	225	654	279	933	773	115	888	396	1	81	1,366	2,299	
GRADUATE	46	1,145	14	81	191	241	1,718	119	1,837	64	105	169	109	0	1	279	2,116	
HUNTER	52	9	1	0	712	403	1,177	439	1,616	1,628	114	1,742	575	16	204	2,537	4,153	
JOHN JAY	8	1	11	0	416	323	759	211	970	842	92	934	390	0	109	1,433	2,403	
LAW SCHOOL	0	37	0	0	43	64	144	27	171	0	5	5	13	0	12	30	201	
LEHMAN	1	0	0	0	375	253	629	261	890	593	39	632	305	19	60	1,016	1,906	
MEDGAR EVERS	0	0	0	0	178	206	384	160	544	311	34	345	172	0	36	553	1,097	
NYC TECH	0	0	3	0	450	223	676	268	944	1,174	206	1,380	253	0	33	1,666	2,610	
QUEENS	12	36	0	4	611	309	972	316	1,288	1,039	91	1,130	372	4	91	1,597	2,885	
SCHOOL OF JOURNALISM	0	0	0	0	20	20	40	14	54	71	14	85	11	0	4	100	154	
SCHOOL OF PROF. STUDIES	0	0	0	0	16	95	111	15	126	233	33	266	32	0	0	298	424	
YORK	0	0	0	0	216	164	380	203	583	499	57	556	216	0	44	816	1,399	
SENIOR COLLEGE SUB-TOTAL	172	1,357	47	85	5,307	4,242	11,210	3,793	15,003	9,918	1,251	11,169	4,274	78	1,061	16,582	31,585	
BMCC	0	0	0	0	564	316	880	413	1,293	1,279	118	1,397	511	0	65	1,973	3,266	
BXCC	0	0	0	0	326	212	538	345	883	536	91	627	269	26	15	937	1,820	
GUTTMAN	0	0	0	0	46	82	128	25	153	27	7	34	92	6	2	134	287	
HOTOS	0	0	0	0	190	197	387	213	600	359	14	373	238	0	15	626	1,226	
KBCC	0	0	0	0	352	280	632	331	963	852	372	1,224	422	159	24	1,829	2,792	
LGCC	0	0	0	0	396	366	762	315	1,077	871	132	1,003	516	0	45	1,564	2,641	
QBCC	0	0	0	0	395	263	658	305	963	763	159	922	476	0	27	1,425	2,388	
COMMUNITY COLLEGE SUB-TOTAL	0	0	0	0	2,269	1,716	3,985	1,947	5,932	4,687	893	5,580	2,524	191	193	8,488	14,420	
HUNTER CAMPUS SCHOOLS	0	0	0	0	140	8	148	23	171	38	0	38	14	0	1	53	224	
UNIVERSITY-WIDE TOTAL	172	1,357	47	85	7,716	5,966	15,343	5,763	21,106	14,643	2,144	16,787	6,812	269	1,255	25,123	46,229	

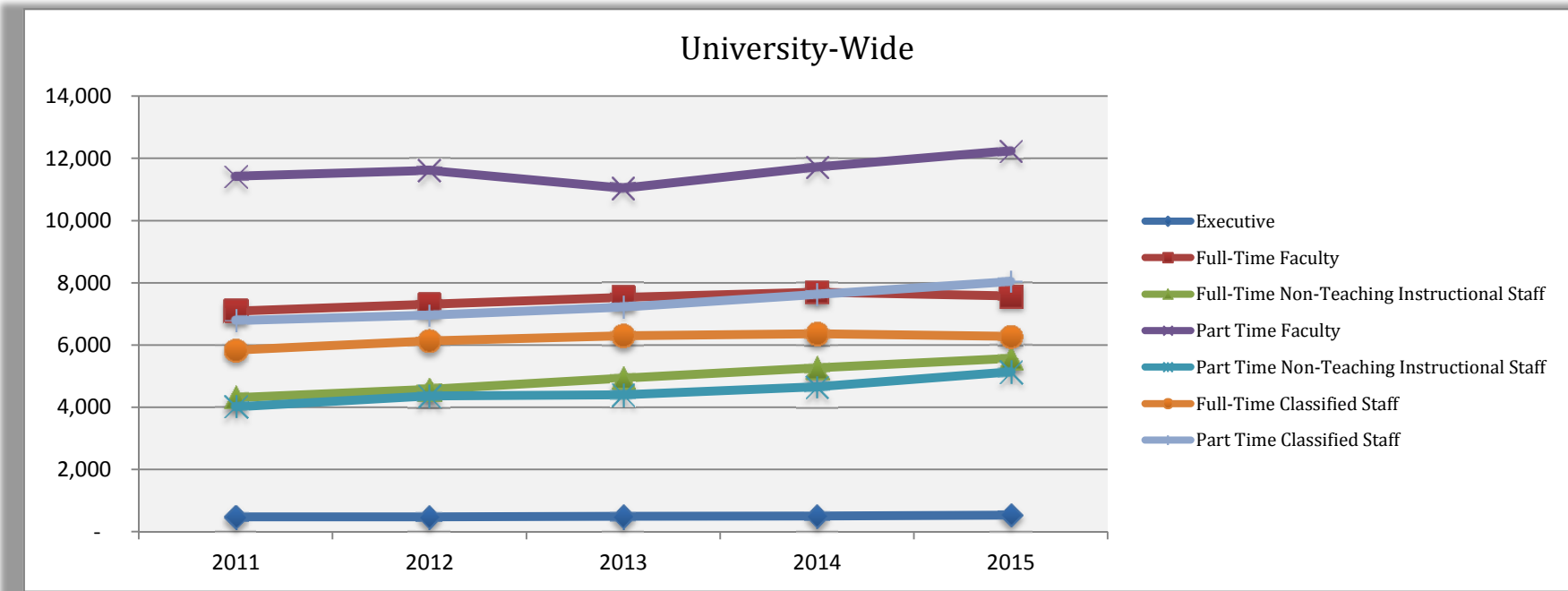
* Numbers may differ from reports generated by CUNYfirst

** The Sophie Davis School of Biomedical Education data is merged with City College Data

*** The William E. Macauley Honors College data is merged with The Graduate School and University Center data

Fall 2010 - 2015 Workforce Comparison

Source: Fall 2010 - 2015 Frozen File



Job Function	2011	2012	2013	2014	2015	% Change 2010-2015
Executive	473	476	499	508	534	12.9%
Full-Time Faculty	7,092	7,314	7,533	7,698	7,580	6.9%
Full-Time Non-Teaching Instructional Staff	4,308	4,573	4,934	5,269	5,572	29.3%
Part Time Faculty	11,432	11,610	11,040	11,727	12,250	7.2%
Part Time Non-Teaching Instructional Staff	4,015	4,364	4,403	4,655	5,137	27.9%
Full-Time Classified Staff	5,836	6,133	6,294	6,364	6,275	7.5%
Part Time Classified Staff	6,784	6,957	7,221	7,622	8,039	18.5%
Grand Total	39,940	41,427	41,924	43,843	45,387	13.6%